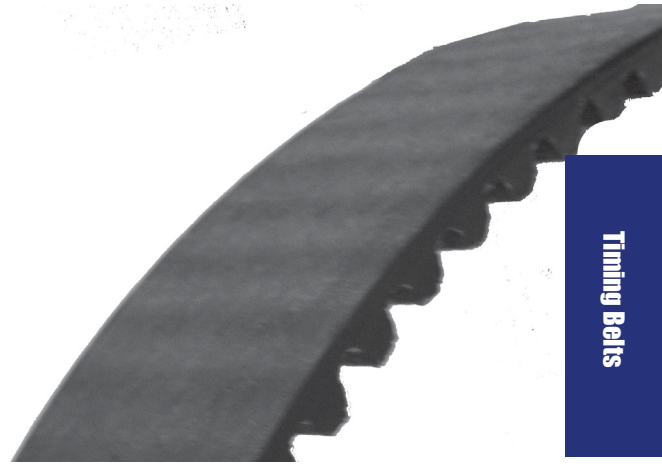


# 8 MM OPEN ENDED POWERHOUSE™ BELTS

(Compatible with PowerGrip® GT2® and PowerGrip® GT3® pitches)

**Standard Widths:**  
20 mm, 30 mm,  
50 mm, 85 mm  
**Neoprene Construction**  
**Fiberglass Reinforcements**



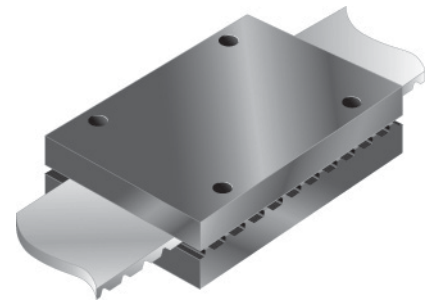
Timing Belts

Part Number	Width	Net Weight per Foot	Maximum Continuous Length
LL8P20	20 mm	0.08	590 feet
LL8P30	30 mm	0.13	590 feet
LL8P50	50 mm	0.21	590 feet
LL8P85	85 mm	0.36	590 feet

Open ended belting is a money-saving, low upkeep alternative to roller chain and is most effective in long length conveying and positioning applications requiring protection from grime, grease, oil, and moisture.

# 8 MM POWERHOUSE™ CLAMPING PLATE

**Standard Widths:**  
20 mm, 30 mm, 50 mm, 85 mm  
**Aluminum**



Part Number	For Belt Width (mm)
CP-8P-20	20 mm
CP-8P-30	30 mm
CP-8P-50	50 mm
CP-8P-85	85 mm

B&B Manufacturing offers a free online service for locating and downloading CAD models in most CAD file formats.

Find this convenient engineering tool and others on our website at:

[www.bbman.com](http://www.bbman.com).